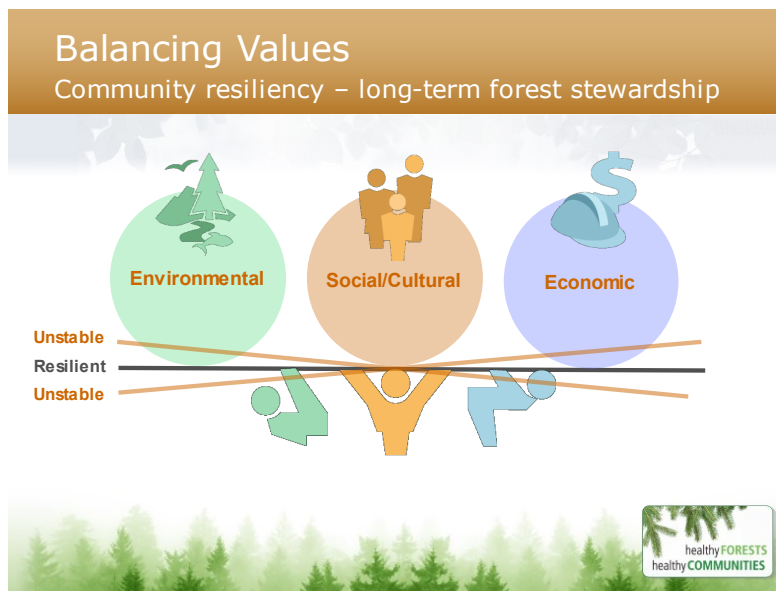


## FOREST RESOURCES INVENTORY Foundation for Community Resiliency

**Bill Bourgeois, PhD, RPF**  
**Coordinator, *Healthy Forests-Healthy Communities***  
**January 2021**

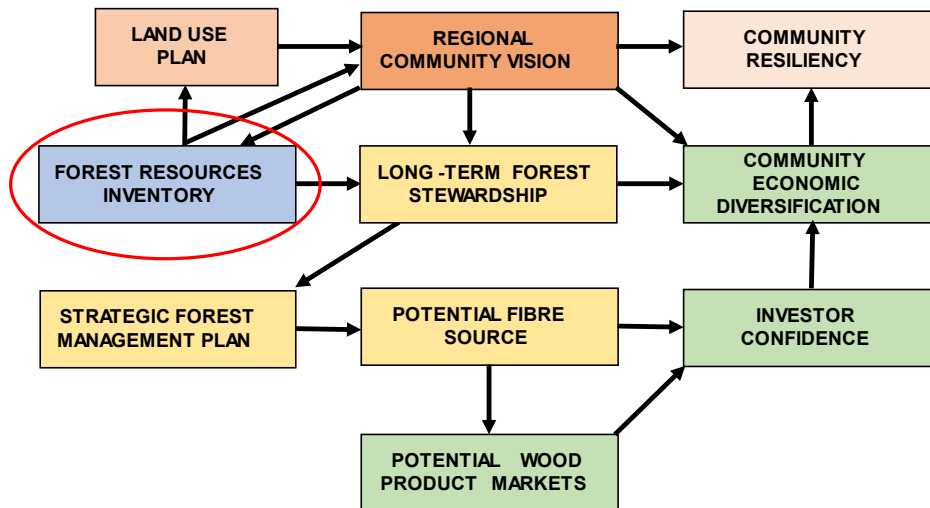
“Community resilience is the capability to anticipate risk, limit impact, and bounce back rapidly through survival, adaptability, evolution, and growth in the face of turbulent change.”<sup>1</sup> BC forest dependent communities achieving this goal require knowledge, information, and data on the long-term condition of their forest and associated economic diversification opportunities. **It is in the best interests of BC communities to insist upon having a robust and detailed forest inventory of Crown land to meet their resiliency needs.**

Moving toward resiliency requires a community to have a vision that is balanced from the integrated perspective of environmental, economic, and social/cultural values, as graphically presented below.



Support for the community vision and the related land use plan, forest management and economic diversification components resides with the relationships with the forest resources inventory as shown below.

<sup>1</sup> Community & Regional Resilience Institute definition, 2013.



Failure to have an inventory that identifies the composition of the forest in sufficient detail and accuracy for strategic and operational decision-making puts the community and the Provincial Government in jeopardy of not being able to address current issues or the potential for being surprised by unforeseen future events. This was recognized by Government when they commissioned the “Blue Ribbon Forest Inventory Review Panel”<sup>2</sup> to review the current inventory Program and provide recommendations to improve the database and Program.

The forest inventory is commonly thought of as primarily used to determine the Allowable Annual Cut (AAC). However, it is also used by 8 Ministries, 2 Crown Corporations, the forest industry, First Nations and NGOs in a wide range of economic and conservation decision-making.

As noted in the *Forest Inventory Review Panel Report*, the decisions made using a less than robust and detailed inventory and Program can be very costly. The estimated cost of generating the desired inventory characteristics can be less than the potential cost associated with poor decisions. Poor data leads to poor and costly decisions. **If communities are to move toward resiliency, they cannot afford to make decisions based on poor data and information.** It is critical they advocate for the acquisition of a BC forest inventory that is up to the challenge! Although this can be viewed as a technical issue left to foresters, it is critical that communities get advice from current inventory users relative to its effectiveness in application for community resiliency decision-making. The implementation of the Forest Inventory Review Panel recommendations is essential and allowing them to just rest on a shelf in Government offices will be at the detriment of communities achieving resiliency.

<sup>2</sup> [https://www2.gov.bc.ca/assets/gov/farming-natural-resources-and-industry/forestry/stewardship/forest-analysis-inventory/panel\\_summary\\_report\\_final.pdf](https://www2.gov.bc.ca/assets/gov/farming-natural-resources-and-industry/forestry/stewardship/forest-analysis-inventory/panel_summary_report_final.pdf)